

# Kirlian Photography with the use of "Voltage-sensitive Liquid Crystals" A NEW TECHNIQUE

by Alfred Benjamin, A.R.P.S., RBP. and  
Gerald Sugarman, M.D.

KIRLIAN PHOTOGRAPHY has been used to demonstrate the aura around animate objects such as plant leaves and fingers, as well as other subjects. Studies to date have been inconclusive of what is being measured, i.e. electrical forces, hemodynamics or pressure-sensitive tissue. Most studies have been done during psychological examination, associated with anxiety, "thought-processes", which may be influenced by the physiological or psychological state of the person.

Our investigation is centered around pathological states such as hemodynamic disorders, musculoskeletal diseases, and neurocutaneous diseases. The examples cited in this report are ovarian carcinoma and diabetes mellitus with the interesting phenomenon of hypnosis which may be used to alter the hemodynamic state or electrical field and by-pass the anxiety state. However, the purpose of this brief report is to demonstrate the effectiveness of a new technique utilizing voltage-sensitive cholesteric liquid crystals with Kirlian photography.

We believe this technique has never been used before.

## TECHNIQUE

The Kirlian setup with its power sources is connected by cable to a larger plate holder which lies on a wooden table. A thin film of voltage-sensitive liquid crystal is spread on a photographic glass plate. This is put into the plate holder. The subject is given a trial run so there will be the exact pressure placed on the finger tip and exact positioning. Then the finger tip is placed directly in contact with the glass containing the voltage-sensitive liquid crystals. An electrical charge of one second is pulsed through the photographic glass. This generates an electrical field around the finger tip.

The glass slide is photographed for a permanent record using a single lens reflex camera with a macro lens and Ektachrome-X film. The correct lighting angle and direction is established visually by moving the light around the plate until the colors are clearly identified. Reflections are eliminated with

the use of a Kodak Pola-Screen.

## DISCUSSION

The initial electrical field normally visible in Kirlian imagery, has an effect beyond its own reach in that it influences the characteristics of an adjacent field of charge. The energy released by the initial cold electron charge produces some equal and opposite effect which materializes into the nature of a "field" of the opposite charge, which can be seen with the use of "voltage-sensitive liquid crystals."

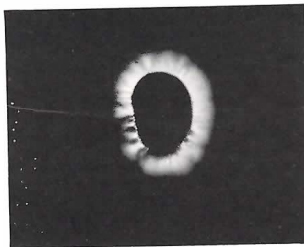
"Voltage-sensitive liquid crystals" show that the initial field is influencing an adjacent field. (Establishing a secondary field which Kirlian routine photography does not do.) Therefore, one can evaluate the charge transfer characteristics of a patient. This may be an important tool in medical diagnoses and treatment as well as followup progress.

A 37-year-old woman who has moderately advanced ovarian carcinoma was investigated with the use of the electrically-charged cholesteric liquid crystals Kirlian technique. It was noted on routine photography that there were defects in the aura around the finger tips (1a). This led to further investigation with the use of color prints and a means by which one could study the progression of her disorder while she is being treated with cobalt and chemotherapy. The results were readily and easily reproduced, showing the same field defects.

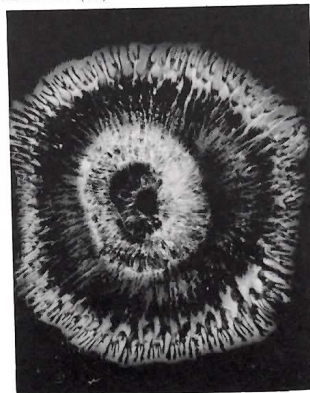
The results with the new voltage-sensitive cholesteric liquid crystal photography, using the same voltage as in the Kirlian photography, as well as all variables such as pressure, temperature, moisture, anxiety states being the same, except for the use of a special voltage-sensitive crystals. The results indicate that she had a similar defect in the aura around her finger tips (1b). We used this subject for further studies in hypnosis, noting that hypnosis definitely increased the aura around her finger tips (2a), (2b). Hypnosis was utilized to alleviate her symptoms of nausea, vomiting, pain and depression.

It will be noted that when hypnosis was used in conjunction with tactile transference by placing the hands on her shoulders, her field was also increased (2c). Whether this has a place in the healing effect of patients is not known, but possibly more electrical fields are increased by the tactile kinesthetic activity of other persons. Immediately after hypnosis the finger tips were again photographed to see if the aura remained at its heightened level. It was noted that it did not (2d).

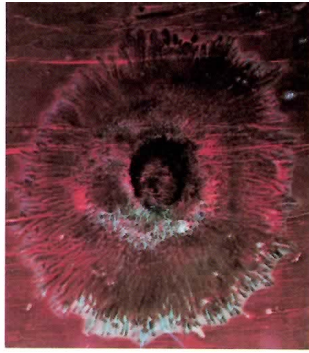
Another patient, a 58-year-old man



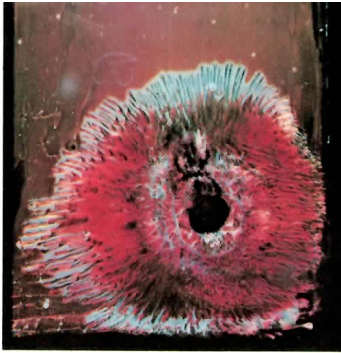
Kirlian photograph 2nd finger, right hand, patient with cancer of the left ovary with metastasis. (1a)



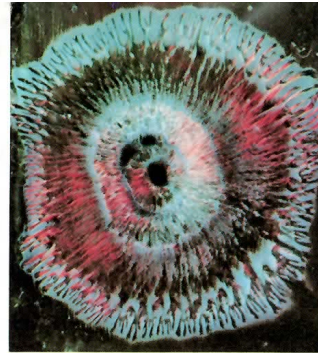
With voltage-sensitive cholesteric liquid crystals of same patient, same finger tip at the same time (1b)



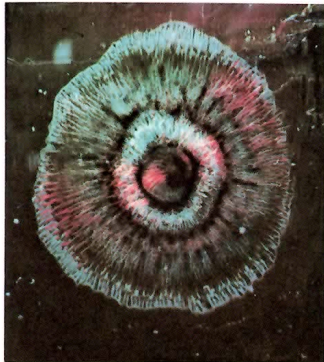
2a



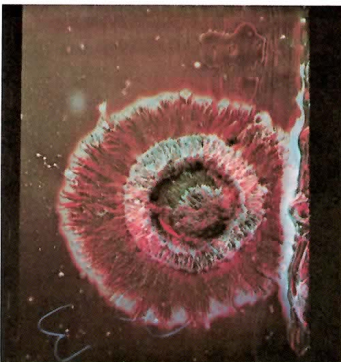
2b



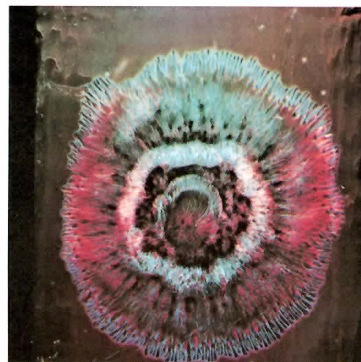
2c



2d



3a



3b

who has severe diabetes mellitus with partial amputation of the left lower extremity below the knee, was studied (3a). After self-hypnosis, his electrical field markedly increased. He has demonstrated self-hypnosis in his own healing powers and well-being. (3b)

More studies will be undertaken to correlate hypnotic states as its usefulness applies to treatment of various medical and psychological disorders. Kirlian photography using voltage-sensitive cholesteric liquid crystals may provide a new means for evaluating diagnosis and prognosis in many disease states, as well as the usefulness of various modes of therapy such as drugs or hypno-therapy.



**ACKNOWLEDGEMENTS:**

The authors express their gratitude to Gene Smith, Director of Engineering, TPL Communications, Inc., for expert advice on electrical and mechanical applications in Kirlian photography and to James L. Ferguson, President of the American LIQUID xtal Chemical Corp., for his generous help and information.

Alfred Benjamin, A.R.P.S., RBP, is Director, Audio-Visual Department, Orthopaedic Hospital, 2400 S. Flower St., Los Angeles, Calif.

All with voltage-sensitive cholesteric liquid crystals.

- (2a) Before hypnosis. 37-year-old Caucasian female who has cancer of the left ovary with metastasis.
- (2b) In hypnosis. Same patient. Note increased electrical field.
- (2c) Hypnosis. Plus placing hands on shoulders by hypnotist. Note increased field.
- (2d) After hypnosis. Without post-hypnotic suggestion.
- (3a) 58-year-old patient with diabetes. Before hypnosis.
- (3b) Same patient but with self-hypnosis. Note increased electrical field.

